

**SAFETY SHOES**

**HEROCK**<sup>®</sup>



**EN**

**HEROCKWORKWEAR.COM**



**OUR SHOES  
ARE MADE  
FOR WORKING**



**HERON**  
22MSS2301



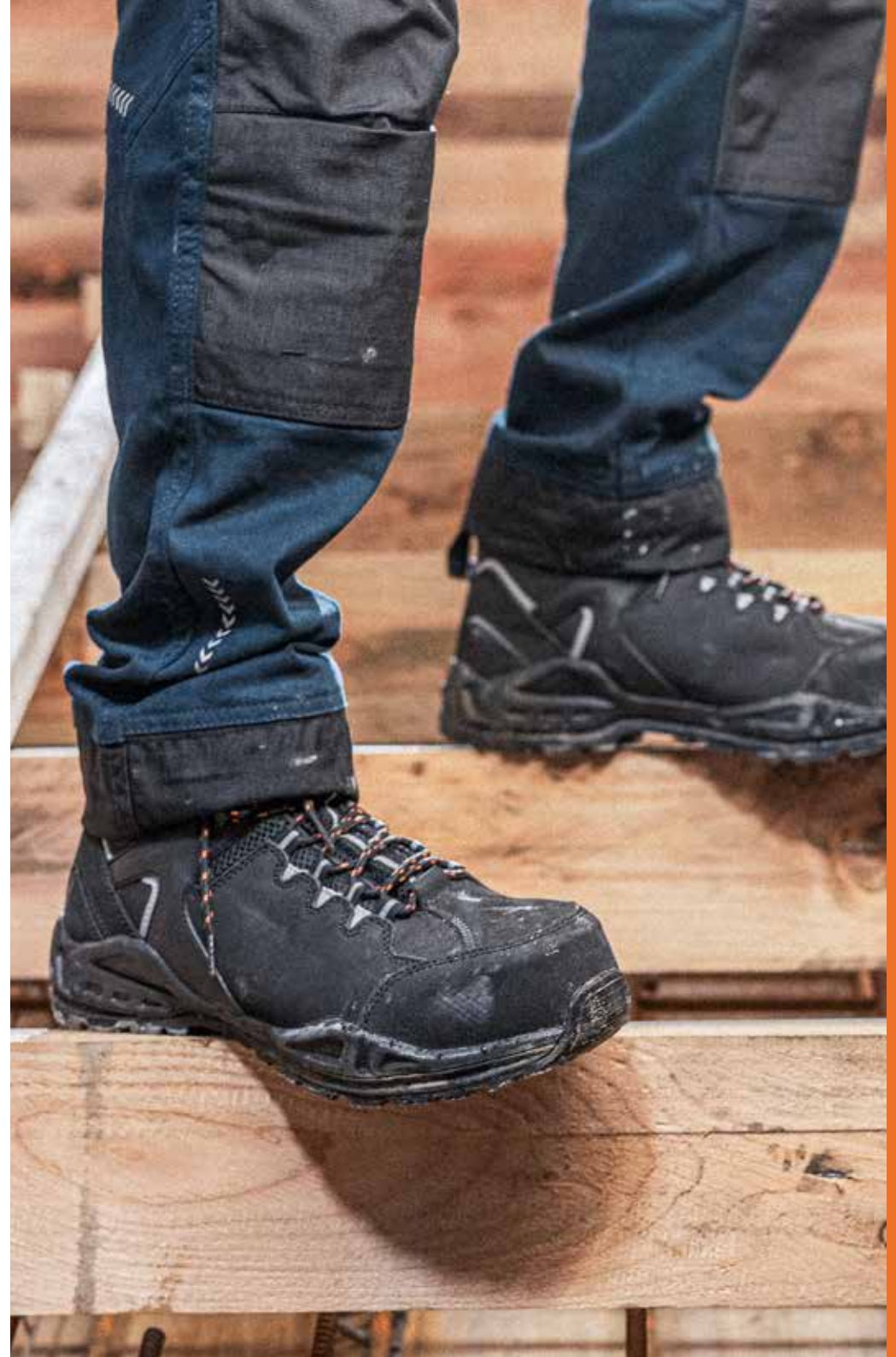
# WHEN THE JOB DEMANDS MORE THAN THE AVERAGE SHOE CAN HANDLE, HEROCK® STEPS IN WITH UNPARALLELED SAFETY AND PERFORMANCE.

In the relentless world of demanding jobs, where every move counts, HEROCK® steps up to the challenge. Our catalogue of safety shoes is not just footwear; it's a bold statement of unparalleled safety and performance for the HEROES that never settle for average.

HEROCK® creates a new benchmark by offering a comprehensive defence against potential hazards at work. Our dedication to keeping you safe at work is demonstrated by the puncture-resistant materials, reinforced toe caps and slip-resistant soles. Our shoes are made with your comfort in mind. They combine flexibility, durability and ergonomic characteristics to support you throughout extended periods of time without sacrificing style.

## **BUILT TO LAST, BUILT TO PERFORM**

Our dedication to durability goes above and beyond. With reinforced stitching and abrasion-resistant materials, our safety shoes are crafted with attention to detail, designed to endure the daily wear and tear of demanding environments. The use of high-performance materials and advanced manufacturing techniques guarantees longevity, creating footwear that stands the test of time. Whether facing challenging terrains or harsh weather conditions, our commitment to durability ensures your footwear remains steadfast, ready to tackle any challenge.



# WE ALWAYS GO THE EXTRA MILE

**HEROCK® PROVIDES THE FASTEST OUT OF STOCK DELIVERY OF PREMIUM FASHIONABLE WORKWEAR AND FOOTWEAR. WHEREVER. WHENEVER.**

People who work in a demanding environment need the right equipment to achieve an optimal performance. HEROCK® makes sure that you always have the perfect gear for every job at your disposal, even when you're confronted with the most testing of work or weather conditions. Our collection guarantees a complete protection without reducing your freedom to move and combines these basic principles with a design that is both classical and contemporary. This way you're perfectly outfitted for the job at hand and guaranteed to be looking good while doing it.

**Crafting Excellence: Our Dedication to Superior Workwear & Footwear**  
HEROCK® continuously invests in product development and improvement, based on the needs of the working HERO. This has led to the development of the HEROCK® HYDROSHIELD, SAFESTEP & COMFORTSTEP.

We work with high-end brands and qualities such as Cordura®, Sorona®, Wasa®, YKK®, Coolmax®, Thermolite® and Meryl® Skinlife.

Explore durability, functionality and comfort with HEROCK® where quality meets the demands of the working HERO.





# GREEN HEROES.

**WE AT HEROCK® HAVE PURPOSELY DECIDED TO MAKE SUSTAINABILITY AN INTEGRAL PART OF OUR BUSINESS. WE FIRMLY BELIEVE THAT WE HAVE A RESPONSIBILITY TO OUR CUSTOMERS, THE ENVIRONMENT AND SOCIETY.**

## Protecting the environment

We prioritize sustainability by reducing waste, using renewable materials, minimizing energy consumption and lowering CO<sub>2</sub> emissions. Our commitment actively contributes to protecting ecosystems, preserving natural resources and mitigating climate change.

## Enhanced product quality

HEROCK® seamlessly combines sustainability with high-quality, durable workwear for challenging conditions. Our focus on lasting comfort meets tough work demands while minimizing environmental impact. Investing in quality reduces the need for frequent replacements, extending product life and promoting environmental sustainability.

## Social responsibility

HEROCK® prioritizes ethical practices throughout its supply chain, collaborating only with manufacturers adhering to high standards. We ensure fair wages, safe working conditions and strictly prohibit child labor. Our commitment extends to acknowledging our responsibility to those involved in the creation of our products.

## Customer focus

HEROCK® acknowledges the rising demand for sustainable choices. Committed to this trend, we offer high-quality, functional workwear aligned with sustainability standards.

## Innovation and focus on the future

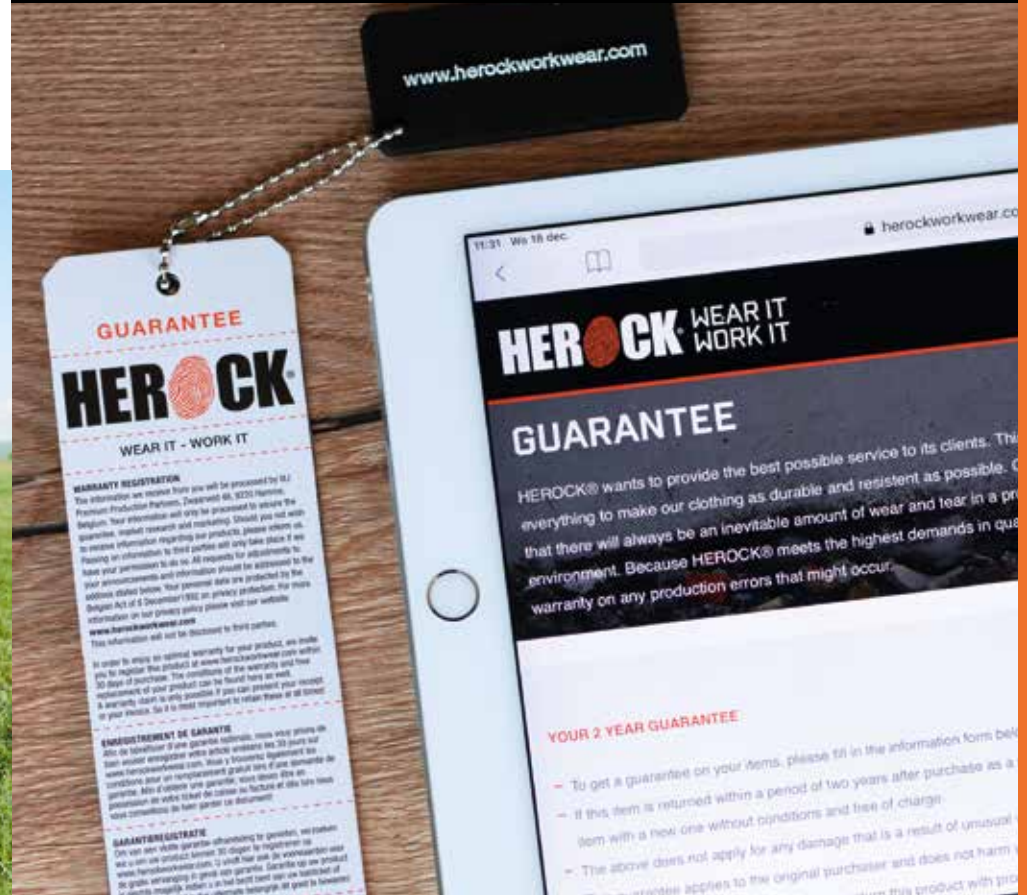
HEROCK® prioritizes sustainability, enabling continuous innovation in processes, materials, and products. Sustainability is not a trend but an essential path to a viable future.



# 2 YEAR GUARANTEE

HEROCK® provides the best possible service to its clients. It means that we do everything to make our clothing as durable and resistant as possible. Of course we do realize that there will always be an inevitable amount of wear and tear in a professional working environment. HEROCK® meets the highest demands in quality, we're able to provide a warranty on any production error that might occur.

Register on [HEROCKworkwear.com/guarantee](https://www.herockworkwear.com/guarantee)





# THE VITAL ROLE OF SAFETY FOOTWEAR IN WORK ENVIRONMENTS

**SAFETY FOOTWEAR IS PART OF THE WORKER'S PERSONAL PROTECTIVE EQUIPMENT (PPE). IT IS ESSENTIAL TO WEAR IT WHEN THE ACTIVITY TO BE PERFORMED REQUIRES IT.**

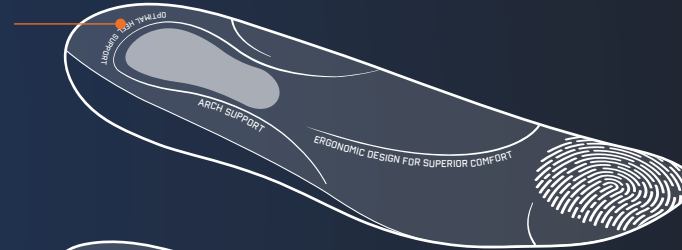
Safety is of paramount importance in the busy world of industrial and construction environments and a key aspect of this is the use of appropriate safety footwear. It plays a crucial role in protecting workers from potential hazards such as heavy objects, sharp materials or slippery surfaces. These specialized shoes are carefully constructed to provide extensive protection, not only to protect the feet from physical injury but also to improve overall comfort during long periods of wear. When you look at the components of safety shoes, you see intricate details that combine to contribute to durability, functionality and compliance with safety standards. From reinforced safety toe caps to slip-resistant soles, each component of the safety shoe serves a purpose in the well-being of those who must face challenging working environments.



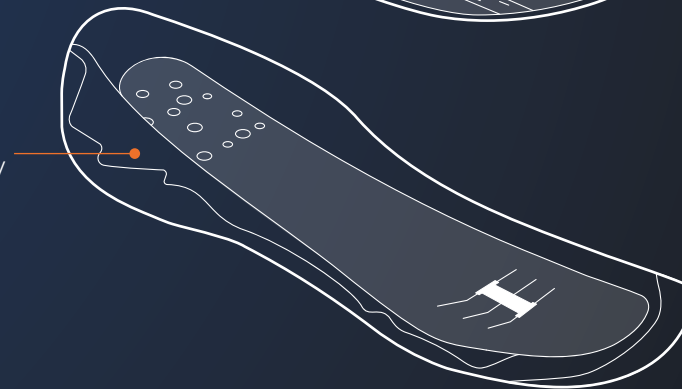


**3****HEROCK® COMFORTSTEP**

Setting a new standard in ergonomic design, the HEROCK® COMFORTSTEP footbed conforms to the natural contours of the foot, providing unmatched support and cushioning. Experience a comfortable fit and enhanced foot health with the HEROCK® COMFORTSTEP footbed.

**1****OUTSOLE**

The HEROCK® outsole, made from materials like PU, PU/rubber or EVA/rubber, provides superior abrasion resistance and grip, making it an essential part of our safety shoes.

**4****UPPER MATERIALS/TECHNOLOGY**

HEROCK® offers a diverse range of upper materials, such as leather, suede TPU and different kinds of textile technologies, securing a blend of quality and versatility. This array of materials is carefully chosen to provide the best possible quality and comfort for the working HERO.

**2****HEROCK® SAFESTEP**

Engineered with advanced materials, the HEROCK® SAFESTEP midsole provides an outstanding protection against sharp objects and delivers durability and reliability making it an essential component for those seeking uncompromising safety.



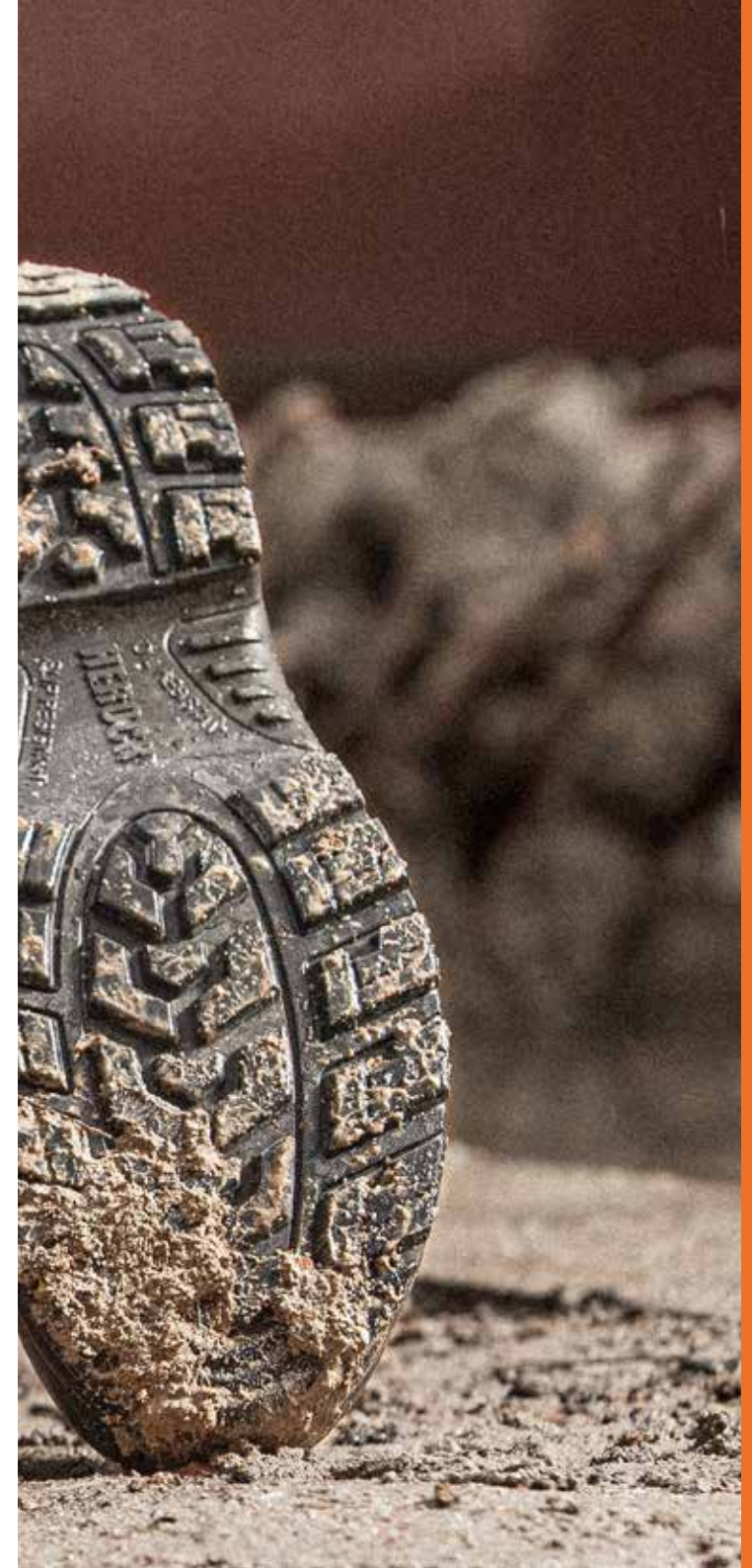
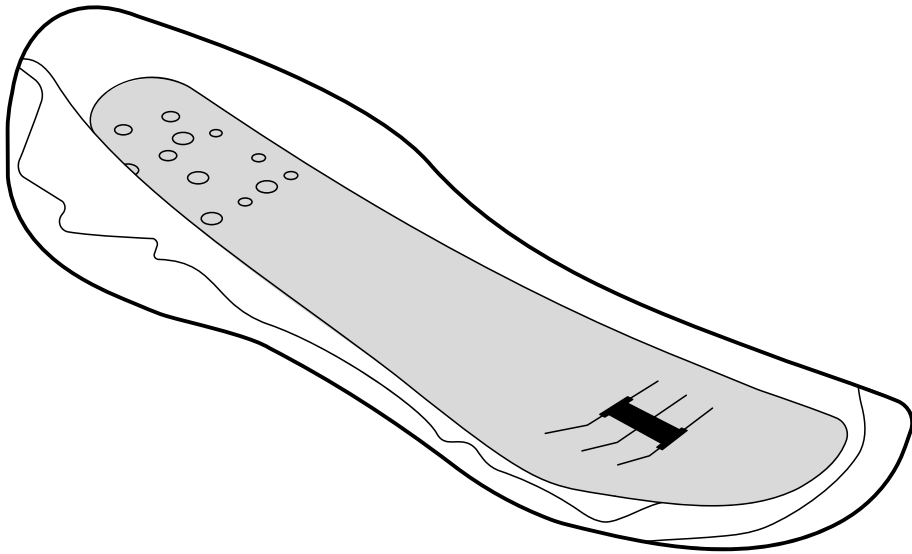




# 1 OUTSOLE

## EXPERIENCE THE POWER OF THE HEROCK OUTSOLE WITH UNMATCHED COMFORT AND PERFORMANCE.

The HEROCK® outsole, crafted from materials like PU (polyurethane), PU/rubber or EVA (Ethylen Vinyl Acetate)/rubber, ensures exceptional abrasion resistance and reliable grip on various surfaces. These specialized outsoles go beyond conventional safety features, contributing to overall comfort, performance and safety, making it a preferred choice for those seeking footwear that excels in both durability and traction.





# OUTSOLE MATERIALS

DISCOVER THE UNSUNG HERO OF OUR SAFETY FOOTWEAR - THE OUTSOLE. OFTEN UNDERESTIMATED, IT PLAYS A PIVOTAL ROLE IN YOUR PROTECTION. DIVE INTO THE DETAILS OF OUR OUTSOLE MATERIALS, EMPOWERING YOUR DECISIONS WITH KNOWLEDGE.

## PU

A versatile foamed material, available in two versions: single-density (PU) which has a uniform density and double-density (PU/PU), featuring a softer midsole and a more compact outsole for a balanced combination of comfort and durability.



### FEATURES OF PU:

- Flexible
- Good shock absorber
- Slip resistant
- Resilient to abrasion

## RUBBER

Utilized either as a standalone material for outsoles or in combination with a softer midsole, which can be composed of materials like PU, EVA or other similar substances.



### FEATURES OF RUBBER:

- Slip resistant
- Heat resistant (up to 300°C)
- Cut resistant
- Durable and strong
- Offers a long life cycle
- Less flexible than PU

## PVC

PVC (PolyVinyl Chloride) is used only in our mono-material products like rainboots and garden shoes.



### FEATURES OF PVC:

- Strong and resilient to abrasion
- Durable
- Good shock absorber
- Resistant to many chemicals







# 2 HEROCK® SAFESTEP

**THE HEROCK® SAFESTEP ANTI-PERFORATION MIDSOLE SETS THE NEW FOOTWEAR STANDARD PER EN ISO 20345:2022, ENSURING A HIGHER LEVEL OF SAFETY.**

Engineered with advanced materials, this non-metallic midsole provides outstanding protection against punctures and sharp objects. With this anti-perforation midsole, the safety footwear can bear the standard PS, meaning it has passed a penetration test featuring a nail 3 millimetres in diameter. It therefore guarantees piece of mind in challenging work environments, meeting the stringent requirements of the updated standard. The HEROCK® Safestep midsole delivers durability and reliability, making it an essential component for those seeking uncompromising safety in their footwear. Step confidently into the future, knowing HEROCK® SAFESTEP offers the maximum penetration resistance, preserving security and confidence on every stride.



The HEROCK® SAFESTEP is available on the following products: TALIN, TALIN LOW, HERON, VICTUS, LENO, LENO HIGH, ICARUS, SARON







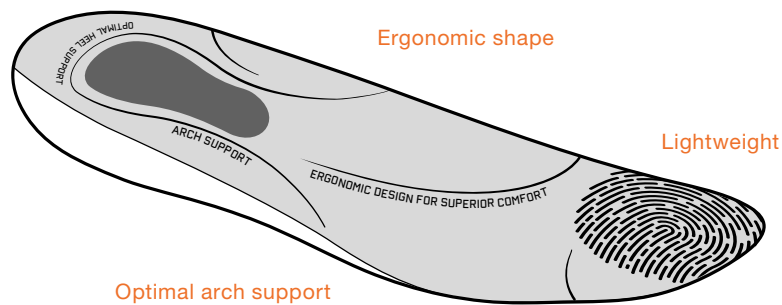


# 3 HEROCK® COMFORTSTEP

## THE HEROCK® COMFORTSTEP ERGONOMIC FOOTBED REVOLUTIONIZES FOOTWEAR COMFORT.

Engineered with precision, it conforms to the natural contours of the foot, providing unmatched support and cushioning for heel and arch. Crafted for extended wear, this footbed alleviates pressure points, promoting a comfortable experience all day long. Experience a comfortable fit and enhanced foot health with the HEROCK® COMFORTSTEP footbed, setting a new standard in ergonomic design. Step into the future of comfort, where every stride embraces a level of luxury and support that only HEROCK® COMFORTSTEP can deliver.

Energy absorption  
in the heel area



Ergonomic shape

Lightweight

Optimal arch support

Made from  
polyurethane foam



The HEROCK® COMFORTSTEP is only available on the following products: TALIN, TALIN LOW, HERON, VICTUS, LENO, LENO HIGH, ICARUS, SARON



# 4 UPPER MATERIALS / TECHNOLOGY

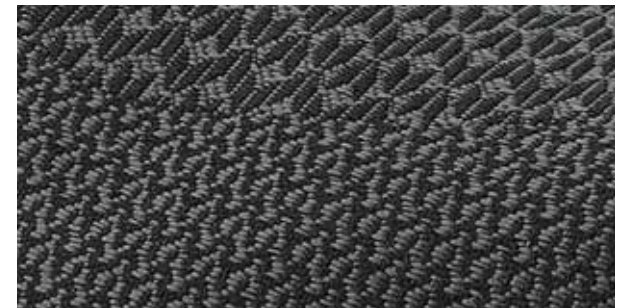
WE AT HEROCK® USE A LARGE VARIETY OF UPPER MATERIALS, DEPENDING ON THE AREA OF APPLICATION. BECAUSE THE UPPER IS SUCH A MAJOR PART OF YOUR SHOE, CHOOSING THE RIGHT MATERIAL IS CRUCIAL.



## LEATHER

Offers excellent durability and protection against abrasions, cuts and punctures. The material can withstand harsh working conditions, ensuring that your feet remain protected at all times.

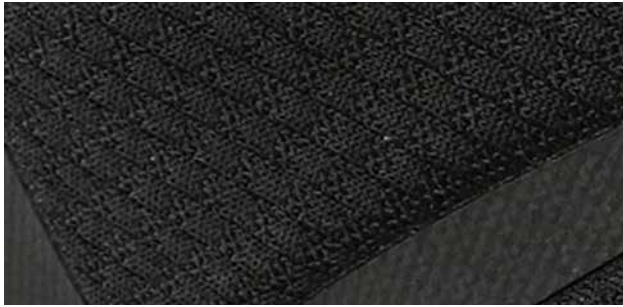
This extremely durable material is primarily sourced from the meat industry. It is accessed after the animal has been killed for its meat, so no animal loses its life specifically to supply leather for footwear. Guided by considerations of quality and price, leather undergoes a transformative process, resulting in different levels of strength and look such as full grain, corrected full grain, nubuck, suede, PU-coated (action) leather, aniline finish leather, embossed leather etc. This diverse range underscores leather's inherent strength and adaptability, rendering it an excellent choice for crafting premium safety footwear. Noteworthy within our collection, safety shoes like VICTUS, ICARUS and many more exemplify our commitment to utilizing high-quality leather.



## TEXTILES

A material crafted from woven or knitted natural and synthetic fibers, valued for its flexibility and durability.

The integration of textiles, whether woven or knitted, with a composition of both natural and synthetic fibers, is experiencing a notable surge in the footwear sector. This momentum is driven by the inherent adaptability of textiles, catering to diverse applications. Achieving an optimal blend of performance and comfort in footwear is accomplished through strategic manipulation of individual fiber properties, employing techniques such as finishing or blending with complementary materials. An illustration of this industry trend is found in our LENO, DAVOS and TITUS shoes.



## SYNTHETICS

Synthetic materials are made from non-leather substances and while these materials often consist of PU, advances in technology are introducing an increasing amount of innovative alternatives to animal skin.



## MICROFIBERS

Microfibers are synthetics, featuring higher performance levels in terms of abrasion, tensile strength, breathability and weight. They are an interesting alternative to suede and nubuck of animal origin.

Microfibers are widely used in the footwear industry. Their durability makes it ideal for footwear that will be exposed to frequent wear and tear.



## CORDURA®

A high-performance fabric known for its exceptional durability and resistance to abrasions, tears and scuffs.

Comprising primarily nylon, it stands out for its remarkable resistance to abrasions, tears and scuffs, making it an optimal material for crafting footwear designed to endure rigorous environments. Its application in safety footwear serves as a testament to the industry's dedication to providing premium protective gear. Notably, our CROSS safety boots exemplify this commitment, as they are meticulously crafted from Cordura® material, ensuring that wearers experience the superior durability and resilience associated with this exceptional fabric in their day-to-day work environments.







# HEROCK® HYDROSHIELD

**THE HEROCK® FOOTWEAR COLLECTION PROUDLY INTRODUCES ITS NEW MODELS VICTUS, ICARUS AND HERON, FEATURING THE CUTTING-EDGE HEROCK® HYDROSHIELD WATERPROOF MEMBRANE.**

The VICTUS, ICARUS and HERON are standing out, embodying the perfect fusion of style, durability, and performance. With the advanced HEROCK® HYDROSHIELD waterproof membrane integrated, this safety footwear takes on the elements fearlessly, keeping your feet dry and comfortable in any weather. This innovative inclusion enhances these shoes, ensuring every pair delivers the confidence to tackle diverse terrains, come rain or shine. Experience the pinnacle of footwear technology and the unbeatable waterproof protection of the HEROCK® HYDROSHIELD, setting new standards in outdoor safety footwear. Step into a world of reliability and sophistication, where each step is a testament to HEROCK®'s commitment to quality and innovation.



**VICTUS**  
23MSS2301



**HERON**  
22MSS2301



**ICARUS**  
23MSS2302

# TOECAPS





# 200 JOULE SAFETY TOECAP

APART FROM THE DIFFERENT MIDSOLES WE DISTINGUISH THREE KINDS OF SAFETY TOECAPS. THEY ALL COMPLY WITH THE EN ISO 20345 REQUIREMENTS. THE MOST IMPORTANT REQUIREMENT IS ENERGY IMPACT RESISTANCE UP TO 200 J. THE BIGGEST DIFFERENCE IN THE SAFETY TOECAPS IS THE WEIGHT.



**METAL SAFETY TOECAP MEET ALL REQUIREMENTS DESCRIBED UNDER EN ISO 20345 AND IS ALSO:**

- more classic
- best resistant to direct impact (although this situation is rare)



**COMPOSITE SAFETY TOECAP MEET ALL REQUIREMENTS DESCRIBED UNDER EN ISO 20345 AND IS ALSO:**

- light compared to the standard steel toecap
- temperature regulating (cooler in summer, warmer in winter)
- anti-magnetic and anti-static
- non-detectable by metal detectors



**CARBON SAFETY TOECAP MEET ALL REQUIREMENTS DESCRIBED UNDER EN ISO 20345 AND IS ALSO:**

- ultra-light compared to the standard steel and composite toecap
- temperature regulating (cooler in summer, warmer in winter)
- anti-magnetic and anti-static
- non-detectable by metal detectors

# NEW FOOTWEAR STANDARD EN ISO 20345:2022



## 1 BASIC FUNDAMENTAL REQUIREMENTS

SB



**IMPACT RESISTANCE**  
(200J)  
**CRUSH RESISTANCE**  
(1500daN)



**STRENGTH AND  
QUALITY OF  
MATERIALS**



**ERGONOMICS AND  
COMFORT OF THE  
SHOE**



**NEW**

**SLIP RESISTANCE**  
(ceramic floor+ soap  
solution)

## 2 ADDITIONAL REQUIREMENTS



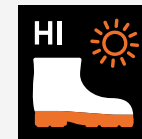
Antistatic



Ankle protection



Cold insulation



Heat insulation



Cut resistance



Energy absorption in  
the heel





Sole resistance to fuel & oil



**NEW**

Ladder grip



Metatarsal protection



Water resistant shoe



**NEW**

Water resistant upper



Conductive shoes



Perforation resistance steel midsole



**NEW**

Perforation resistance non-metallic midsole large nail (4,5mm)



**NEW**

Perforation resistance non-metallic midsole small nail (3mm)



**NEW**

Abrasion resistant scuff cap



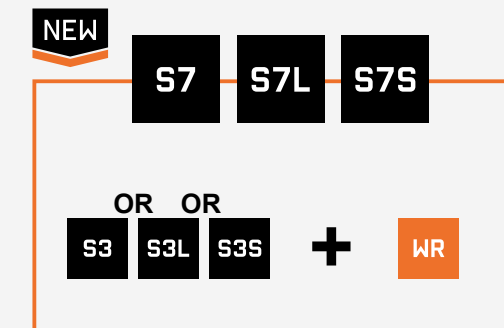
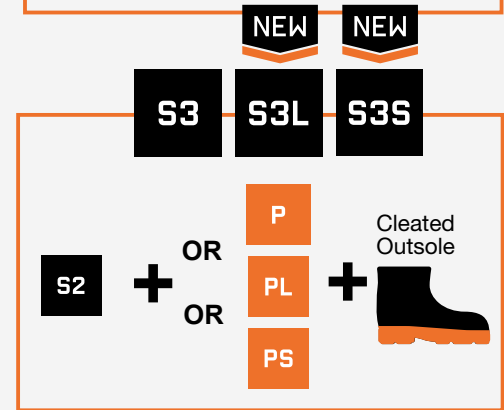
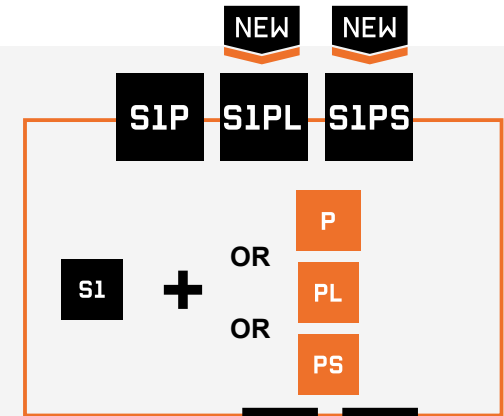
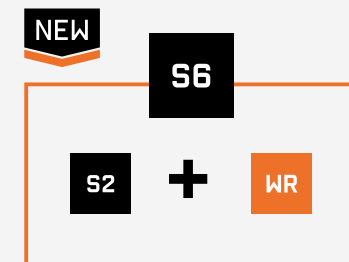
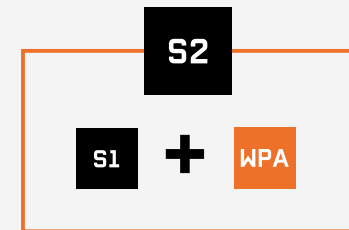
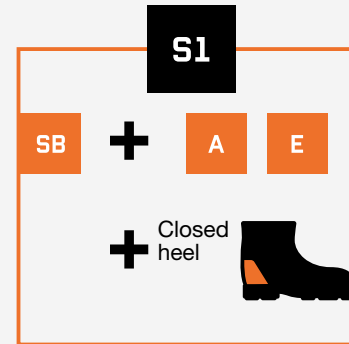
Heat resistant outsole up to 300°C



**NEW**

Slip resistance Ceramic floor + glycerol

# 3 STANDARD LABELS



# SAFETY FOOTWEAR LIMITATIONS

In case one of the safety symbols is not indicated, the shoe will not cover these risks. All materials are prone to aging, even with the highest quality materials. Do not stock shoes longer than two years.

Unfavourable stock conditions may have a bad influence on the usage time and quality.

These conditions may influence aging:

- temperature
- humidity
- changes in material composition

**FREQUENCY IN USE, WEAR AND  
WORKING CONDITIONS DETERMINE  
THE LIFESPAN**



## ANTISTATIC SHOES VS ESD - ELECTROSTATIC DISCHARGE

Antistatic safety shoes and boots, with an electrical resistance range of 0.1 to 1000 MegaOhm, serve to prevent the build-up of static charges in the human body by gradually discharging them to the ground, averting sudden electrical flows between charged objects upon contact. On the other hand, electrostatic discharge (ESD) footwear, characterized by a lower and more specific resistance range of 0.1 to 100 MegaOhm, is designed for specialized environments where protecting sensitive electronic components from potential damage due to controlled static dissipation is paramount. While both types address static electricity concerns, antistatic footwear offers general protection, whereas ESD footwear adheres to stringent standards focused on safeguarding electronic devices from electrostatic discharge in critical industries. For more information about anti-static and ESD safety footwear, please read our user instructions.





### SOLE RESISTANCE TO FUEL & OIL

Fuel & oil resistant soles are created to withstand exposure to hydrocarbons, ensuring your safety in potentially hazardous work.



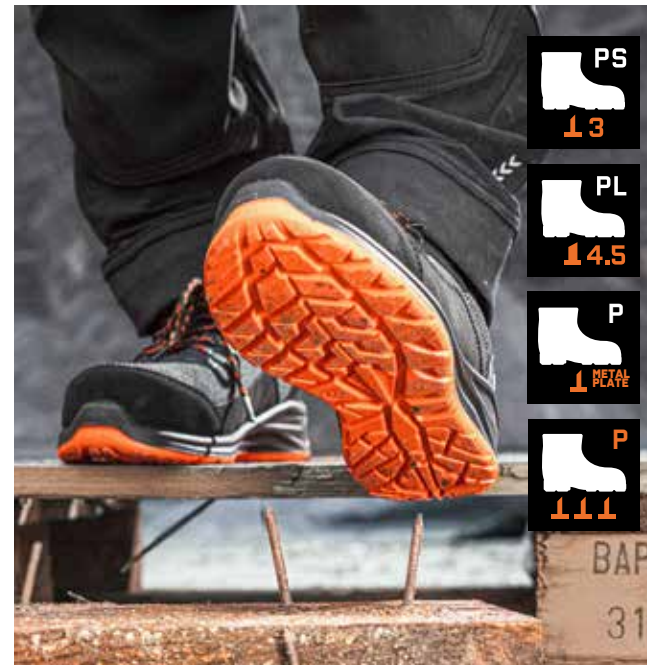
### ABRASION RESISTANT SCUFF CAP

Separately tested abrasion-resistant material to protect the toe cap area. These scuff caps are strategically placed on our footwear to protect against wear and tear. Designed for durability, these caps ensure your safety by guarding against abrasion.



### HEAT RESISTANT OUTSOLE

Heat resistant outsoles can withstand contact heat with temperatures up to 300°C., ensuring confidence and peace of mind in challenging situations.



### PERFORATION RESISTANCE

Perforation-resistant midsoles are embedded during the manufacturing process, between the insole and the outsole. They prevent screws, spikes, nails or sharp scrap metal from puncturing the foot.



## SLIP RESISTANCE

Slip resistant soles provide an advanced grip technology that ensures stability, reducing the potential for slips and falls in various conditions, such as wet floors, oily surfaces, or uneven terrain.



## COLD INSULATION

Cold insulation soles are designed to keep your feet warm and comfortable, making them ideal for working in cold conditions. They provide insulation against cold of the sole up to -17°C.



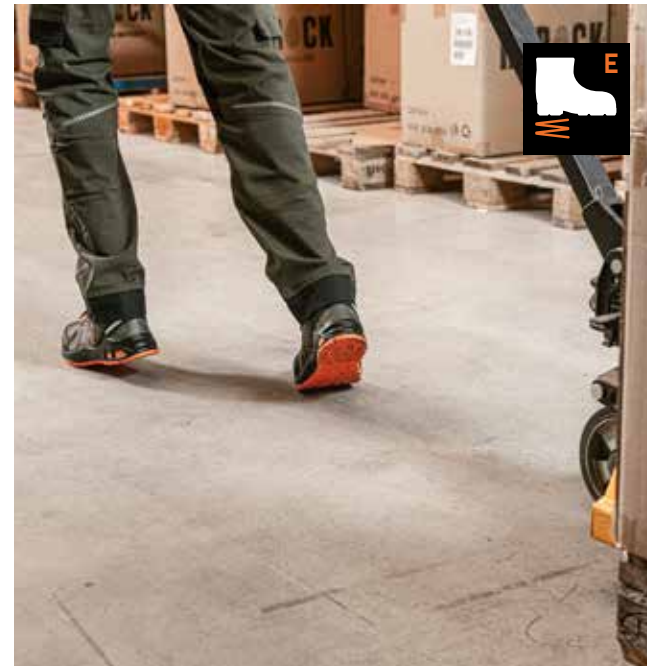
## WATER RESISTANT FOOTWEAR

Water resistant shoes are made for environments that require protection against occasional water exposure. Offering a reliable shield against wet conditions, keeping your feet dry and comfortable during your work.



## ENERGY ABSORPTION IN THE HEEL

Developed to mitigate the impact of running and jumping on the body. Through adept shock absorption and efficient energy restitution, it ensures a seamless blend of comfort and enhanced physical capabilities.







## LADDER GRIP

OUTSOLES CARRYING THE STANDARD LG FEATURE AN ADVANCED OUTSOLE PATTERN TO OFFER EXCELLENT TRACTION ON LADDERS, MINIMIZING THE RISK OF SLIPPING OR LOSING BALANCE.



# TIPS FOR FINDING THE RIGHT SHOE

Always take the time when trying on your shoes. When trying them on, make certain that you can move your toes freely without having your foot fit too loosely in the shoe. Take into account that your feet tend to swell up slightly during the course of the day, so it is best to try on new shoes during the afternoon. Keep in mind in which conditions your shoes will be used for and what kind of work you will be primarily doing. Not every job requires the same footwear.

## HOW MANY TYPES OF SAFETY SHOES ARE THERE?

<b>Safety shoes low model (leather)</b>	→ Fit for people who have to kneel regularly	The foot can easily be moved inside the shoe	Achilles tendon is less protected
<b>Safety shoes high model (leather)</b>	→ Fit for heavy duty work	Sufficient support and protection for the achilles tendon	Foot is less easily moved inside the shoe
<b>Safety boots (leather)</b>	Fit for wet or humid environments	Lining is possible = fit for cold environments	Requires maintenance
<b>Safety boots (synthetic fabric)</b>	Fit for wet environments and for working with chemicals*	Cheap and require low maintenance	Less isolating against cold - sensitive to heat
	<b>WHEN</b>	<b>ADVANTAGE</b>	<b>DISADVANTAGE</b>

\*Chemicals can penetrate leather

## ATTENTION POINTS WHEN PURCHASING YOUR SHOES

In this diagram, you can see which type of foot protection fits best for a specific work environment.

TYPE	WORK ENVIRONMENT				
<b>Safety shoes low model (leather)</b>	→ ■				
<b>Safety shoes high model (leather)</b>	→	→ ■		→ ■	
<b>Safety boots (leather)</b>	→		→ ■		
<b>Safety boots (synthetic fabric)</b>	→		→ ■		→ ■
	<b>KNEELING DOWN</b>	<b>CLIMBING</b>	<b>WET ENVIRONMENT</b>	<b>WELDING AND SOLDERING</b>	<b>WORKING WITH CHEMICALS</b>



## TIPS FOR TESTING YOUR FOOTWEAR

- Choose your shoe according to the job you need it for
- When trying on new shoes, your feet have to be able to move freely and your shoe has to fit the shape of your foot.
- Make sure that you can place one finger behind your foot when you move your foot all the way forward
- Take your time when picking out the right shoes and remember to try them on in the afternoon since your feet swell up during the day



## PER SECTOR

NAME	LABEL	CODE	OUTDOOR	INDOOR SERVICING MAINTENANCE OFFICE	LOGISTICS & TRANSPORT WAREHOUSE SECURITY	CARPENTRY INDUSTRY	CONSTRUCTION	AGRICULTURE
LENO LOW	S1PS	21MSS2302		■	■	■		
LENO HIGH	S1PS	21MSS2401		■	■	■	■	
CROSS LOW	S1P	CK34BS		■	■	■	■	
GANNICUS	S1P	23MSS1402		■	■	■		
SPARTACUS	S1P	23MSS1401		■	■	■		
DAVOS	S1P	23MSS1903		■	■	■		
LEBRON	S1P	23MSS2003		■	■	■		
TITUS	S1P	23MSS2006		■	■			
VARRO	S1P	23MSS2005		■	■			
ROMA	S3	21MSS1301	■	■	■	■	■	■
TALIN LOW	S3S	21MSS2303	■	■	■	■	■	■
TALIN HIGH	S3S	21MSS2301	■	■	■	■	■	■
PRIMUS LOW	S3	CK16S	■	■	■	■	■	■
PRIMUS HIGH	S3	CK01S	■	■	■	■	■	■
GIGANTES LOW	S3	23MSS1802	■	■	■	■	■	■
GIGANTES HIGH	S3	23MSS1801	■	■	■	■	■	■
CONSTRUCTOR	S3	CK06S	■	■	■	■	■	■
THALLO	S3	23MSS2001	■	■	■	■	■	■
MAGNUS	S3	C130SK	■	■	■	■	■	■
METRON	S3	23MSS2002	■	■	■	■	■	■
CONTRIX	S3	23MSS0204	■	■	■	■		
CRIXUS	S3	22MSS1301	■	■	■	■	■	■
SARON	S3S	22MSS2401	■	■	■	■	■	■
HERON	S7S	22MSS2301	■	■	■	■	■	■
VICTUS	S7S	23MSS2301	■	■	■	■	■	■
ICARUS	S7S	23MSS2302	■	■	■	■	■	■
GALOSCHE		S00	■					■
WORKER BOOTS	S5	A00	■				■	■
FARMER BOOTS		21MBT2301	■					■
WORKER BOOTS	S5	21MBT2302	■				■	■

## CARE INSTRUCTIONS TIPS & TRICKS

- Keep your safety shoes in a dry well-ventilated dark room. We advise to use two pairs of safety shoes, allowing your gear to dry.
- Clean your shoes after use with a brush or a dry cloth. Keep them well ventilated and leave them to dry (insert a piece of newspaper if needed). Do not put your shoes in direct sunlight or close to a heat source. If there is a lot of contact with water, please use a water-resistant product and follow the instructions.
- Please avoid concrete, urine, acids, chemicals... They cause tearing of leather.
- Leather shoes need to be oiled from time to time, certainly after you have dried them, in order to prevent tear. The leather will last longer and will hold its natural elasticity. Your shoes will last longer.
- End of use? Do not throw away your shoes, but donate them or recycle. Think about a second life.



**OIL AND WATER  
PROTECT SPRAY**  
23UMI1901

# ROCK YOUR SOCKS OFF

**NO WORKWEAR PACKAGE IS COMPLETE WITHOUT THE RIGHT SOCKS AND AT HEROCK®, WE THINK ABOUT EVERY DETAIL. OUR EXTENSIVE SOCK RANGE ENSURES YOUR OUTFIT IS PERFECTED WITH BREATHABLE, COMFORTABLE, ANTIBACTERIAL AND ANTISTATIC FEATURES.**

Feel the unparalleled benefits of HEROCK® socks, carefully designed to improve your daily working experience. Our breathable fabric keeps your feet cool and fresh all day long and ensures optimal comfort during extended wear. The antibacterial properties contribute to hygiene, promoting a healthier environment for your feet. In addition, the anti-static properties provide an extra layer of protection that reduces the risk of static build-up in various working environments. With HEROCK® socks, you not only enjoy style and durability, but also a range of practical benefits that prioritise your well-being in the workplace.



## DONNA 21USK0902

**FEATURES** Socks with HEROCK® logo - 3 colours mix (set of 3 pair)

**COMPOSITION** 65% polyester - 7% polyurethane - 1% elastane - 27% cotton Jersey

**SIZES** 35/38 - 39/42 - 43/46

**WASHING INSTRUCTIONS** 

**COLOURS** mix black/heather grey/navy

**SOLD BY** 10



## UBIN 22USK2301

**FEATURES** Comfortable middle long socks with reinforced heel and toe (set of 3 pair)

**COMPOSITION** 65% cotton - 25% polyester - 5% polyamide - 5% elastane

**SIZES** 39/42 - 43/45 - 46/48

**COLOURS** black

**SOLD BY** 10





## FRESCO 23USK1901

**FEATURES** Comfortable, quick drying, breathable, antistatic and antibacterial low socks that keep you fresh with HEROCK® logo - pre-shaped left and right foot - transpiration canals

**COMPOSITION** 80% cotton - 17% polyamide - 3% elastane

**SIZES** 38/40 - 40/42 - 42/44 - 44/46

**WASHING INSTRUCTIONS** 

**COLOURS** black

**SOLD BY** 10

## COMPRESSION 23USK1903

**FEATURES** Comfortable, quick drying, breathable, antistatic and strong high compression socks with HEROCK® logo - pre-shaped left and right foot

**COMPOSITION** 73% polyamide - 10% elastane - 8% polypropylene - 6% polyamide Cordura® - 3% other fibers

**SIZES** 38/40 - 40/42 - 42/44 - 44/46

**WASHING INSTRUCTIONS** 

**COLOURS** black

**SOLD BY** 10

**CORDURA®**

## CARPO 23USK0901

**FEATURES** Quick drying, breathable, antistatic and antibacterial socks with HEROCK® logo - pre-shaped left and right foot - transpiration canals

**COMPOSITION** 35% cotton - 45% polyester Coolmax® - 15% polyamide - 5% elastane

**SIZES** 35/38 - 39/42 - 43/46

**WASHING INSTRUCTIONS** 

**COLOURS** black

**SOLD BY** 10

**COOLMAX**

## VOLTIS 23USK1902

**NEW**

**FEATURES** Comfortable, quick drying, breathable and antistatic middle long socks with Coolmax® technology with HEROCK® logo - pre-shaped left and right foot - transpiration canals

**COMPOSITION** 54% polyester Coolmax® - 34% cotton - 7% polyamide - 3% other fibers - 2% elastane

**SIZES** 38/40 - 40/42 - 42/44 - 44/46

**WASHING INSTRUCTIONS** 

**COLOURS** black

**SOLD BY** 10

**COOLMAX**



# COMPLETE COVERAGE, COMPLETE PERFORMANCE: HEROCK® FROM HEAD TO TOE.



## ACCESSORIES & FOOTWEAR

Perfect your wardrobe and embrace unmatched comfort and durability, seamlessly integrated from head to toe. Explore our diverse range of accessories, including belts, caps, hats, socks, bags and more. Advance your style and enhance your performance by completing your look with HEROCK® footwear.

## UPPER BODY

Elevate your workwear with HEROCK® tops, uplifting your style and fortifying your performance. Explore our diverse selection of upper body gear, featuring T-shirts, polos, sweaters, fleeces, jackets, bodywarmers and more.

## LOWER BODY

Journey through our diverse lower body gear collection, showcasing carefully crafted trousers, versatile shorts, and reliable overalls. Each piece is more than just an article of clothing; it's a statement of purpose. Experience the synergy of style, resilience, and functionality as you gear up for the extraordinary with HEROCK®.







# S1



NEW

**LENO LOW**  
21MSS2302  
PAGE: 36



NEW

**LENO HIGH**  
21MSS2401  
PAGE: 37



**CROSS LOW**  
CK34BS  
PAGE: 38



**GANNICUS**  
23MSS1402  
PAGE: 39



**SPARTACUS**  
23MSS1401  
PAGE: 40



**DAVOS**  
23MSS1903  
PAGE: 41



**LEBRON**  
23MSS2003  
PAGE: 42



**TITUS**  
23MSS2006  
PAGE: 44



**VARRO**  
23MSS2005  
PAGE: 45

# S3



**ROMA**  
21MSS1301  
PAGE: 47



NEW

**TALIN LOW**  
21MSS2303  
PAGE: 48



NEW

**TALIN HIGH**  
21MSS2301  
PAGE: 49



**PRIMUS LOW**  
CK16S  
PAGE: 50



**PRIMUS HIGH**  
CK01S  
PAGE: 51



**GIGANTES LOW**  
23MSS1802  
PAGE: 52



**GIGANTES HIGH**  
23MSS1801  
PAGE: 53



**CONSTRUCTOR**  
CK06S  
PAGE: 54



**THALLO**  
23MSS2001  
PAGE: 55



**MAGNUS**  
C130SK  
PAGE: 56



**METRON**  
23MSS2002  
PAGE: 57



**CONTRIX**  
23MSS0204  
PAGE: 58



**CRIXUS**  
22MSS1301  
PAGE: 59



NEW

**SARON**  
22MSS2401  
PAGE: 60

# S7



NEW

**HERON**  
22MSS2301  
PAGE: 62



NEW

**VICTUS**  
23MSS2301  
PAGE: 64



NEW

**ICARUS**  
23MSS2302  
PAGE: 65

# PVC RANGE



**GALOSCHE**  
S00  
PAGE: 67



**WORKER BOOTS**  
A00  
PAGE: 68



NEW

**FARMER BOOTS**  
21MBT2301  
PAGE: 69



NEW

**WORKER BOOTS**  
21MBT2302  
PAGE: 70



# S1 SHOES





# LENO LOW

## 21MSS2302

### SAFETY TRAINERS

**FEATURES** Safety trainers - **Toecap:** Composite 200J toecap - **Midsole:** HEROCK® SAFESTEP non-metallic anti-perforation midsole - **Insole:** HEROCK® COMFORTSTEP ergonomic high-comfort footbed with arch and heel support - **Outsole:** Dual density PU/ PU outsole - **Last:** Comfortable - Reinforced nose - Soft padded collar - Sample weight (size 43): 615g - **Safety Standard:** S1PS SR FO SC- BS EN IEC 61340-4-3:2018 ESD - EN ISO 20345:2022

**COMPOSITION** **Upper:** Abrasion-resistant flyknit textile - **Lining:** Breathable mesh lining

**SIZES** EU 37-47 UK 4-12 US 5-12 ½



**COLOURS** black/anthracite - black/orange



NEW





# LENO HIGH

## 21MSS2401

### HIGH SAFETY TRAINERS WITH REINFORCED NOSE

**FEATURES** High safety trainers - **Toecap:** Composite 200J toecap - **Midsole:** HEROCK® SAFESTEP non-metallic anti-perforation midsole - **Insole:** HEROCK® COMFORTSTEP ergonomic high-comfort footbed with arch and heel support - **Outsole:** Dual density PU/PU outsole - **Last:** Comfortable - Reinforced nose - Soft padded collar - Sample weight (size 43): 675g- **Safety Standard:** S1PS SR FO SC - BS EN IEC 61340-4-3:2018 ESD EN ISO 20345:2022

**COMPOSITION** **Upper:** Abrasion-resistant flyknit textile - **Lining:** Breathable mesh lining

**SIZES** EU 37-47 UK 4-12 US 5-12½

**COLOURS** black



NEW



# CROSS

## CK34BS

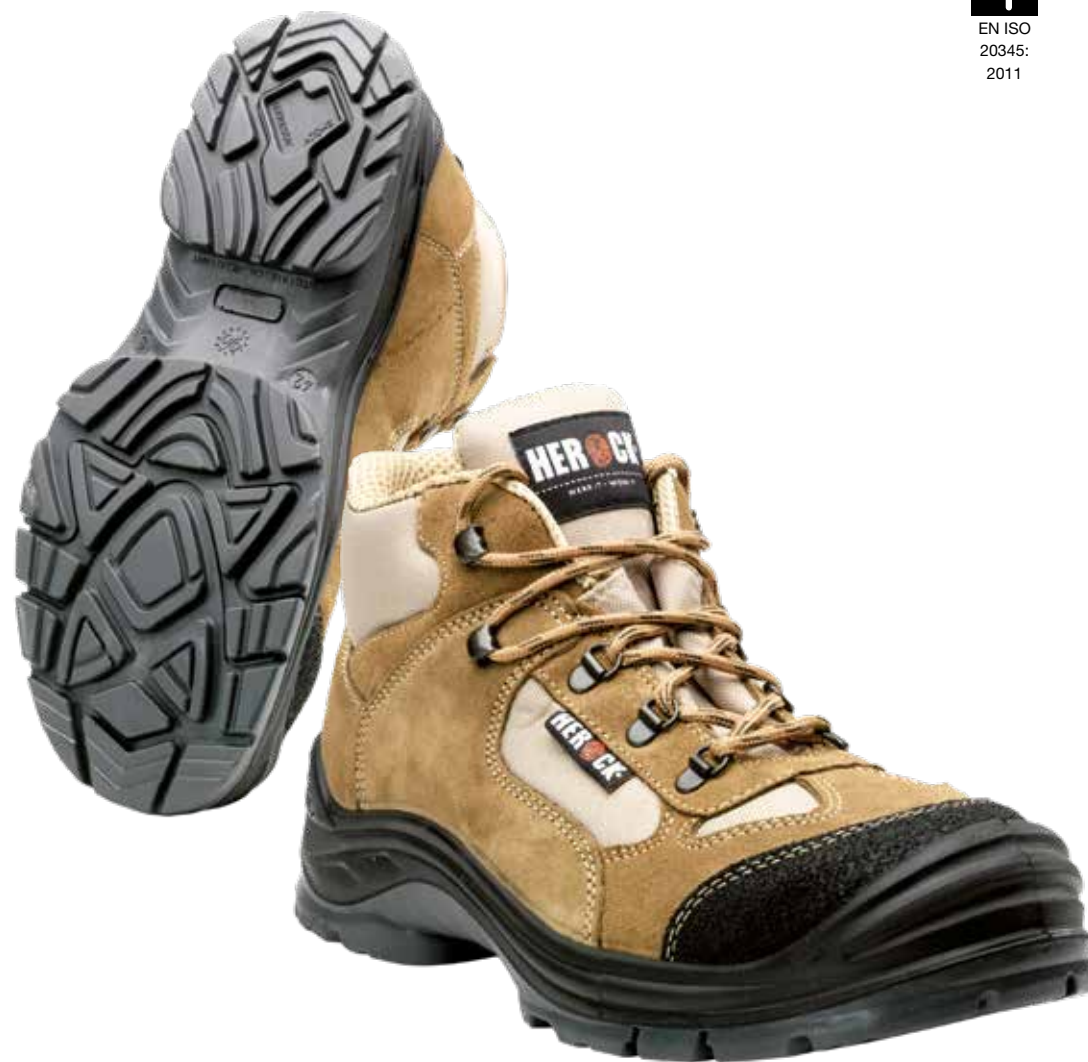
### SAFETY BOOTS

**FEATURES** Hiking shoes with PU overcap - **Toecap:** Composite 200J - **Midsole:** Non-metallic anti-perforation midsole - **Insole:** Antistatic and removable textile material with latex back - **Outsole:** Dual density PU - **Last:** Mondopoint 11 - wide and comfortable - black anti-abrasion material on the front and on the back - PU padded tongue and collar - **Safety Standard:** S1P SRC - EN ISO 20345:2011

**COMPOSITION** **Upper:** Suede and Cordura® material - **Lining:** 3D beige breathable lining with abrasion-resistant material on the internal heel

**SIZES** EU 37-47 UK 4-12 US 5-12½

**COLOURS** beige





# GANNICUS

## 23MSS1402

### SAFETY TRAINERS

**FEATURES** Safety trainers - **Toecap:** Steel - **Midssole:** Non-metallic anti-perforation midssole - **Insole:** Anatomic, antistatic and removable - **Outsole:** PU/RPU with PU application on the heel, dual density - **Last:** Mondopoint 10,5 - wide and comfortable - **Safety Standard:** S1P SRC - EN ISO 20345:2011

**COMPOSITION** **Upper:** Soft velour suede with upper tongue and collar in polyester Oxford - **Lining:** Microfibre breathable lining

**SIZES** EU 37-47 UK 4-12 US 5-12½

**COLOURS** grey



# SPARTACUS

## 23MSS1401

### SAFETY TRAINERS

**FEATURES** Safety trainers - **Toecap:** Steel - **Midssole:** Non-metallic anti-perforation midssole - **Insole:** Anatomic, antistatic and removable - **Outsole:** PU/RPU with PU application on the heel, dual density - **Last:** Mondopoint 10,5 - wide and comfortable - **Safety Standard:** S1P SRC - EN ISO 20345:2011

**COMPOSITION** **Upper:** Soft velour suede - **Lining:** Microfibre breathable lining

**SIZES** EU 37-47 UK 4-12 US 5-12½

**COLOURS** black





# DAVOS

## 23MSS1903

### SAFETY TRAINERS

**FEATURES** Safety trainers - **Toecap:** Composite 200J - **Midsole:** Non-metallic anti-perforation midsole - **Insole:** Removable, antistatic and anatomical textile material with EVA back - **Outsole:** EVA and durable rubber, it has a high resistance to high and low temperatures - **Last:** Comfortable - antistatic, oil- and chemical resistant - **Safety Standard:** S1P SRC - EN ISO 20345:2011

**COMPOSITION** **Upper:** Black fabric and PU finishing - **Lining:** 3D black breathable lining with abrasion-resistant material on the internal heel

**SIZES** EU 37-47 UK 4-12 US 5-12½

**COLOURS** black



EN ISO  
20345:  
2011



# LEBRON

## 23MSS2003

### MEDIUM HIGH SAFETY TRAINERS

**FEATURES** Medium high safety trainers - **Toecap:** Composite 200J - **Midsole:** Non-metallic anti-perforation midsole - **Insole:** Removable, antistatic and anatomical textile material with EVA back - **Outsole:** EVA and durable rubber, it has a high resistance to high and low temperatures - **Last:** Comfortable - antistatic, oil- and chemical resistant - **Safety Standard:** S1P SRC - EN ISO 20345:2011

**COMPOSITION** **Upper:** black fabric and PU finishing - **Lining:** 3D black breathable lining with abrasion-resistant material on the internal heel

**SIZES** EU 37-47 UK 4-12 US 5-12½

**COLOURS** black



EN ISO  
20345:  
2011





# TITUS

23MSS2006



SUPER LIGHTWEIGHT  
SAFETY TRAINERS

CARBON 200J  
TOECAP

NON-METALLIC  
ANTI-PERFORATION  
LIGHTWEIGHT MIDSOLE



# TITUS

## 23MSS2006

### SAFETY TRAINERS

**FEATURES** Super lightweight safety trainers - **Nose:** Carbon 200J - **Midsole:** Non-metallic anti-perforation lightweight midsole - **Insole:** Antistatic, anatomically and removable textile material - **Outsole:** PU/PU injection with polyester and polyether - **Last:** Comfortable - antistatic, oil- and chemical resistant - **Safety Standard:** S1P SRC - EN ISO 20345:2011

**COMPOSITION** **Upper:** 100% polyester abrasion resistant fabric - **Lining:** 3D breathable lining with abrasion-resistant material on the internal heel

**SIZES** EU 37-47 UK 4-12 US 5-12½



**COLOURS** anthracite - royal blue - orange



EN ISO  
20345:  
2011



# VARRO

## 23MSS2005

### SAFETY TRAINERS

**FEATURES** Super lightweight safety trainers - **Nose:** Carbon 200J - **Midsole:** Non-metallic anti-perforation lightweight midsole - **Insole:** Antistatic, anatomically and removable textile material - **Outsole:** PU/PU injection with polyester and polyether - **Last:** Comfortable - antistatic, oil- and chemical resistant - **Safety Standard:** S1P SRC - EN ISO 20345:2011

**COMPOSITION** **Upper:** Abrasion resistant fabric - **Lining:** 3D breathable lining with abrasion-resistant material on the internal heel

**SIZES** EU 37-47 UK 4-12 US 5-12½

**COLOURS** dark khaki



EN ISO  
20345:  
2011



# S3 SHOES





# ROMA

## 21MSS1301

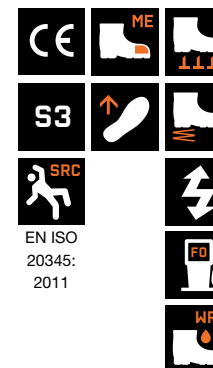
### SAFETY BOOTS

**FEATURES** Safety boots in water-repellent leather - **Toecap:** Steel - **Midsole:** Metallic anti-perforation midsole - **Insole:** Antistatic and removable insole - **Outsole:** Single density PU - **Last:** Mondopoint 10,5 - wide and comfortable - **Safety Standard:** S3 SRC - EN ISO 20345:2011

**COMPOSITION** **Upper:** Water-repellent leather - **Lining:** Breathable textile lining

**SIZES** EU 37-47 UK 4-12 US 5-12½

**COLOURS** black



# TALIN LOW

## 21MSS2303

### SAFETY SHOES

**FEATURES** Safety shoes in water-repellent leather with PU overcap - **Toecap:** Composite 200J toecap - **Midsole:** HEROCK® SAFESTEP non-metallic anti-perforation midsole - **Insole:** HEROCK® COMFORTSTEP ergonomic high-comfort footbed with arch and heel support - **Outsole:** Dual density PU/PU outsole - **Last:** Comfortable - PU scuff cap - Soft padded collar - Sample weight (size 43): 680g - **Safety Standard:** S3S SR FO SC LG - BS EN IEC 61340-4-3:2018 ESD - EN ISO 20345:2022

**COMPOSITION** **Upper:** Water-repellent leather - **Lining:** Breathable 3D-mesh lining

**SIZES** EU 37-47 UK 4-12 US 5-12½

**COLOURS** black



NEW





# TALIN HIGH

## 21MSS2301

### SAFETY BOOTS

**FEATURES** Safety boots in water-repellent leather with PU overcap - **Toecap:** Composite 200J toecap - **Midsole:** HEROCK® SAFESTEP non-metallic anti-perforation midsole - **Insole:** HEROCK® COMFORTSTEP ergonomic high-comfort footbed with arch and heel support - **Outsole:** Dual density PU/PU outsole - **Last:** Comfortable - PU scuff cap - Soft padded collar - Sample weight (size 43): 720g - **Safety Standard:** S3S SR FO SC LG - BS EN IEC 61340-4-3:2018 ESD - EN ISO 20345:2022

**COMPOSITION** **Upper:** Water-repellent leather - **Lining:** Breathable 3D-mesh lining

**SIZES** EU 37-47 UK 4-12 US 5-12½

**COLOURS** black



NEW



# PRIMUS LOW

## CK16S

### SAFETY SHOES

**FEATURES** Safety shoes in water-repellent leather with PU overcap - **Toecap:** Composite 200J - **Midsole:** Non-metallic anti-perforation midsole - **Insole:** Antistatic and removable textile material with latex back - **Outsole:** Dual density PU - **Last:** Mondopoint 11 - wide and comfortable - PU padded tongue and collar - **Safety Standard:** S3 SRC - EN ISO 20345:2011

**COMPOSITION** **Upper:** Smooth, water-repellent leather - **Lining:** 3D orange breathable lining with abrasion-resistant material on the internal heel

**SIZES** EU 37-47 UK 4-12 US 5-12½

**COLOURS** black





# PRIMUS HIGH CK01S

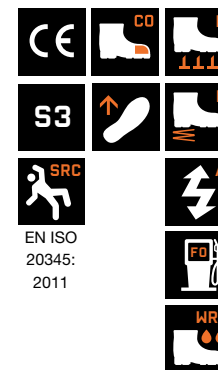
## SAFETY BOOTS

**FEATURES** Safety boots in water-repellent leather with PU overcap - **Toecap:** Composite 200J - **Midsole:** Non-metallic anti-perforation midsole - **Insole:** Antistatic and removable textile material with latex back - **Outsole:** Dual density PU - **Last:** Mondopoint 11 - wide and comfortable - PU padded tongue and collar - **Safety Standard:** S3 SRC - EN ISO 20345:2011

**COMPOSITION** **Upper:** Smooth, water-repellent leather - **Lining:** 3D orange breathable lining with abrasion-resistant material on the internal heel

**SIZES** EU 37-47 UK 4-12 US 5-12½

**COLOURS** black



# GIGANTES LOW

## 23MSS1802

### SAFETY SHOES

**FEATURES** Safety shoes in water-repellent leather - **Toecap:** Composite 200J - **Midsole:** Non-metallic anti-perforation midsole - **Insole:** Removable, antistatic and anatomical textile material with EVA back - **Outsole:** Durable rubber, it has a high resistance to high and low temperatures - **Last:** Comfortable - antistatic, oil and chemical resistant - **Safety Standard:** S3 SRC - EN ISO 20345:2011

**COMPOSITION** **Upper:** Nubuck water-repellent leather - **Lining:** 3D orange breathable lining with abrasion-resistant material on the internal heel

**SIZES** EU 37-47 UK 4-12 US 5-12½

**COLOURS** black





# GIGANTES HIGH

## 23MSS1801

### SAFETY BOOTS

**FEATURES** Safety boots in water-repellent leather - **Toecap:** composite 200J - **Midssole:** Non-metallic anti-perforation midssole - **Insole:** Removable, antistatic and anatomical textile material with EVA back - **Outsole:** EVA and durable rubber, it has a high resistance to high and low temperatures - **Last:** Comfortable - antistatic, oil- and chemical resistant - **Safety Standard:** S3 SRC - EN ISO 20345:2011

**COMPOSITION** **Upper:** Nubuck water-repellent leather - **Lining:** 3D orange breathable lining with abrasion-resistant material on the internal heel

**SIZES** EU 37-47 UK 4-12 US 5-12½

**COLOURS** black



# CONSTRUCTOR

## CK06S

### SAFETY BOOTS

**FEATURES** Full-grain leather safety boots with PU overcap - **Toecap:** Composite 200J - **Midsole:** Non-metallic anti-perforation midsole - **Insole:** Antistatic and removable textile material with latex back - **Outsole:** Dual density PU - **Last:** Mondopoint 11 - wide and comfortable - PU padded tongue and collar - **Safety Standard:** S3 SRC - EN ISO 20345:2011

**COMPOSITION** **Upper:** Smooth, full grain aniline leather - **Lining:** 3D grey breathable lining with abrasion-resistant material on the internal heel

**SIZES** EU 37-47 UK 4-12 US 5-12½

**COLOURS** black





# THALLO

## 23MSS2001

### SAFETY BOOTS

**FEATURES** Safety boots in water-repellent leather with reinforced nose - **Toecap:** composite 200J - **Midsole:** Non-metallic anti-perforation midsole - **Insole:** Removable, antistatic and anatomical textile material with EVA back - **Outsole:** EVA and durable rubber, it has a high resistance to high and low temperatures - **Last:** Comfortable - antistatic, oil- and chemical resistant - **Safety Standard:** S3 SRC - EN ISO 20345:2011

**COMPOSITION** **Upper:** Water-repellent nubuck leather - **Lining:** 3D orange breathable lining with abrasion-resistant material on the internal heel

**SIZES** EU 37-47 UK 4-12 US 5-12½

**COLOURS** black



# MAGNUS

## C130SK

### SAFETY BOOTS

**FEATURES** Full-grain leather safety boots with PU overcap - **Toecap:** Composite 200J - **Midsole:** Non-metallic anti-perforation midsole - **Insole:** Antistatic and removable - **Outsole:** Dual density PU with TPU heel support - **Last:** Mondopoint 11 - wide and comfortable - black textile collar - padded heel and collar - **Safety Standard:** S3 SRC - EN ISO 20345:2011

**COMPOSITION** **Upper:** Full-grain nubuck leather - **Lining:** 3D breathable lining with abrasion-resistant material on the internal heel

**SIZES** EU 37-47 UK 4-12 US 5-12½

**COLOURS** brown





# METRON

## 23MSS2002

### SAFETY SHOES

**FEATURES** Safety shoes in water-repellent leather with quick-release buckle - **Toecap:** Composite 200J - **Midsole:** Non-metallic anti-perforation midsole - **Insole:** Removable, antistatic and anatomical textile material with EVA back - **Outsole:** EVA and durable rubber, it has a high resistance to high and low temperatures - **Last:** Comfortable - antistatic, oil- and chemical resistant - **Safety Standard:** S3 SRC - EN ISO 20345:2011

**COMPOSITION** **Upper:** Water-repellent nubuck leather - **Lining:** 3D orange breathable lining with abrasion-resistant material on the internal heel

**SIZES** EU 37-47 UK 4-12 US 5-12½

**COLOURS** black



# CONTRIX

## 23MSS0204

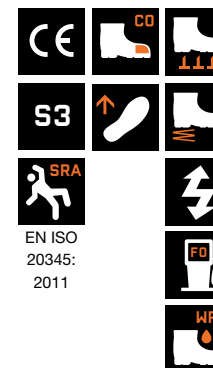
### SAFETY TRAINERS

**FEATURES** Safety trainers in water-repellent leather - **Toecap:** Composite 200J - **Midsole:** Non-metallic anti-perforation midsole - **Insole:** Antistatic and comfortable arch support - **Outsole:** TPU/PU sole - **Last:** Mondopoint 11 - wide and comfortable - **Safety Standard:** S3 SRA - EN ISO 20345:2011

**COMPOSITION** **Upper:** Black suede and full grain leather water-repellent - **Lining:** 3D breathable lining with abrasion-resistant material on the internal heel

**SIZES** EU 37-47 UK 4-12 US 5-12½

**COLOURS** black





# CRIXUS

## 22MSS1301

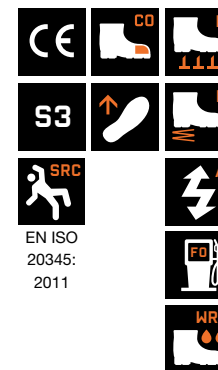
### SAFETY BOOTS

**FEATURES** Comfortable full-grain leather winter boot with warm lining - **Toecap:** Composite 200J - **Midsole:** Non-metallic anti-perforation midsole - **Insole:** Removable, antistatic and anatomical textile material with latex back - **Outsole:** Dual density PU - **Last:** Mondopoint 11 - wide and comfortable - **Safety Standard:** S3 SRC - EN ISO 20345:2011

**COMPOSITION** **Upper:** Full-grain leather with Kevlar® stitching on the instep - **Lining:** polyester fur lining

**SIZES** EU 37-47 UK 4-12 US 5-12 ½

**COLOURS** brown



# SARON

## 22MSS2401

### HIGH SAFETY TRAINERS

**FEATURES** High safety trainers - **Toecap:** Composite 200J toecap - **Midsole:** HEROCK® SAFESTEP non-metallic anti-perforation midsole - **Insole:** HEROCK® COMFORTSTEP ergonomic high-comfort footbed with arch and heel support - **Outsole:** Rubber outsole - **Last:** Comfortable - Reinforced nose - Soft padded collar - **Sample weight (size 43):** 662g - **Safety Standard:** S3S SR FO HRO SC - BS EN IEC 61340-4-3:2018 ESD - EN ISO 20345:2022

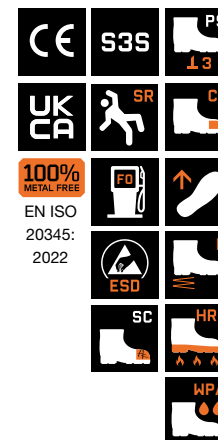
**COMPOSITION** **Upper:** Water-repellent leather - **Lining:** Breathable mesh lining

**SIZES** EU 37-47 UK 4-12 US 5-12½

**COLOURS** Dark khaki/black



NEW





# S7 SHOES



# HERON

## 22MSS2301

### SAFETY BOOTS

**FEATURES** Waterproof leather safety boots with PU overcap - **Toecap:** Composite 200J toecap - **Midsole:** HEROCK® SAFESTEP non-metallic anti-perforation midsole - **Insole:** HEROCK® COMFORTSTEP ergonomic high-comfort footbed with arch and heel support - **Outsole:** Dual density PU/PU outsole - **Last:** Comfortable - PU scuff cap - Soft padded collar - Reflective details - Sample weight (size 43): 720g - **Safety Standard:** S7S SR FO SC LG - BS EN IEC 61340-4-3:2018 ESD - EN ISO 20345:2022

**COMPOSITION** **Upper:** Water-repellent leather - **Lining:** HEROCK® HYDROSHIELD waterproof membrane

**SIZES** EU 37-47 UK 4-12 US 5-12½

**COLOURS** black



NEW





# VICTUS

23MSS2301

FULL-GRAIN LEATHER

---

WATERPROOF BOOTS

---

TPU SCUFF CAP





# VICTUS

## 23MSS2301

### SAFETY BOOTS

**FEATURES** Full-grain leather waterproof safety boots - **Toecap:** Composite 200J toecap - **Midsole:** HEROCK® SAFESTEP non-metallic anti-perforation midsole - **Insole:** HEROCK® COMFORTSTEP ergonomic high-comfort footbed with arch and heel support - **Outsole:** EVA/Rubber outsole, resistant to high temperatures (HRO) - **Last:** Comfortable - TPU scuff cap - Soft padded collar - Reflective details - Sample weight (size 43): 710g - **Safety Standard:** S7S SR FO HRO SC- BS EN IEC 61340-4-3:2018 ESD- EN ISO 20345:2022

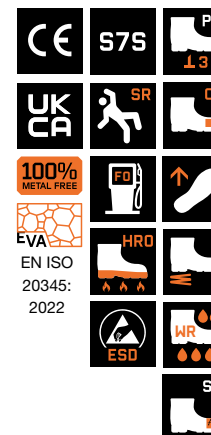
**COMPOSITION** **Upper:** Full-grain nubuck leather - **Lining:** HEROCK® HYDROSHIELD waterproof membrane

**SIZES** EU 37-47 UK 4-12 US 5-12½

**COLOURS** black



NEW





# ICARUS

## 23MSS2302

### SAFETY BOOTS

**FEATURES** Full-grain leather waterproof safety boots - **Toecap:** Composite 200J toecap - **Midsole:** HEROCK® SAFESTEP non-metallic anti-perforation midsole - **Insole:** HEROCK® COMFORTSTEP ergonomic high-comfort footbed with arch and heel support - **Outsole:** PU/Rubber outsole, resistant to high temperatures (HRO) - **Last:** Comfortable - PU scuff cap - Sample weight (size 43): 950g - **Safety Standard:** S7S SR FO HRO CI SC - BS EN IEC 61340-4-3:2018 ESD - EN ISO 20345:2022

**COMPOSITION** **Upper:** Full-grain leather - **Lining:** HEROCK® Hydrosshield waterproof membrane and polyester fur

**SIZES** EU 37-47 UK 4-12 US 5-12½

**COLOURS** brown



NEW





# PVC RANGE





# GALOSCHE

## S00

### GARDENING

**FEATURES** Waterproof gardening shoes

**COMPOSITION** Upper: PVC - Lining: Polyester - Outsole: PVC

**SIZES** EU 36-46 UK 3-11 US 4½-11½

**COLOURS** green



# WORKER BOOTS

## A00

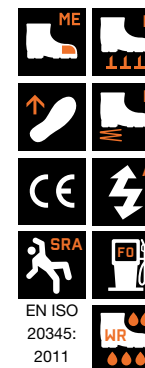
### SAFETY BOOTS S5 SRA

**FEATURES** Knee boot - **Toecap:** Extra large steel toe cap resistant to 200J - **Midsole:** Steel - **Outsole:** PVC, shock absorbing in the heel area, antistatic and anti-slip - resistant to oils, hydrocarbons - **Safety Standard:** S5 SRA - EN ISO 20345:2011

**COMPOSITION** **Upper:** PVC - **Lining:** Polyester - **Sole:** PVC with nitrile rubber

**SIZES** EU 36-48 UK 3-13 US 4½-13½

**COLOURS** black



  
**PHTHALATE  
FREE**



# FARMER BOOTS

## 21MBT2301

### GARDENING BOOTS OB E SRA

**FEATURES** Knee boot - **Last:** Extra wide fitting - **Outsole:** PVC, shock absorbing in the heel

**COMPOSITION** **Upper:** PVC - **Lining:** Polyester - **Sole:** PVC

**SIZES** **EU** 36-48 **UK** 3-13 **US** 4½-13½

**COLOURS** green



NEW



PHTHALATE  
FREE

# WORKER BOOTS

## 21MBT2302

### SAFETY BOOTS S5 SRC

**FEATURES** Knee boot - **Toecap:** Extra large steel toe cap resistant to 200J - **Midsole:** Steel - **Outsole:** PVC, shock absorbing in the heel area, antistatic and anti-slip - resistant to oils, hydrocarbons - **Safety Standard:** S5 SRC - EN ISO 20345:2011

**COMPOSITION** **Upper:** PVC - **Lining:** polyester - **Sole:** PVC with nitrile rubber.  
\* consists of minimum 60% pre-consumer recycled pvc content

**SIZES** EU 38-48 UK 5-13 US 5½-13½

**COLOURS** green





# SIZE CHART

HEROCK® SIZE (EU)	37	38	39	40	41	42	43	44	45	46	47
UK	4	5	6	6 <sup>1/2</sup>	7	8	9	10	10 <sup>1/2</sup>	11	12
US	5	5 <sup>1/2</sup>	6 <sup>1/2</sup>	7	8	8 <sup>1/2</sup>	9 <sup>1/2</sup>	10	11	11 <sup>1/2</sup>	12 <sup>1/2</sup>

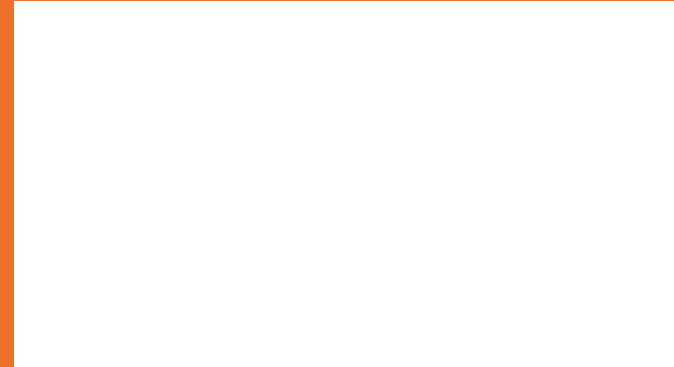
## DISCLAIMER

HEROCK® is constantly improving and developing its products and reserves the right to improve items in this catalogue or to change its collection. Price changes are possible in case of fundamental changes in the USD rate or transport and oil prices.

HEROCK® takes no responsibility for print errors or any other mistakes.

HEROCK® Workwear is a registered brand name of the Belgian company Van Laere International NV, one of the major players in the field of work clothing, company clothing, promotional garments, sports- and leisurewear.

**WE ARE THE ONES WHO BUILD YOUR HOUSES AND CITIES. WE CONSTRUCT THE ROADS AND BRIDGES THAT CONNECT THE ENTIRE WORLD. WE KEEP YOU SAFE AND DRY WHEN THE SKIES FALL DOWN. WHEN SOMETHING IS BROKEN, WE ARE THE ONES WHO FIX IT. WE STAND OUR GROUND IN THE FACE OF STORMY WEATHER, DIZZYING HEIGHTS AND ALL THE OTHER DANGERS THAT STAND IN OUR WAY. WE ARE THE ONES WHO MAKE SURE THAT THE WORLD KEEPS ON GOING ROUND AND ROUND. WE ARE HEROES.**



**WE ARE HEROCK®**

**HEROCK® HEADQUARTERS**

Industrieterrein Zwaarveld 48  
(Zone rood)  
9220 Hamme  
België

Tel: +32 (0)52 44 48 21  
Fax: +32 (0)52 44 60 43  
info@herockworkwear.com  
BTW: BE 0420 539 144

## **CONTACT US**

SALES@HEROCKWORKWEAR.COM

T. : 0032 52 44 48 21



/Herockworkwear



/Herock-workwear



/Herockworkwear



/Herockworkwear